

SERVING THE COMMUNITY

Mech Arm Group Inc.

173 Advance Blvd Unit# 57,
Brampton, ON L6T 4Z7

E-MAIL: info@mecharmgroup.com
www.MechArmGroup.com

Phone: (647) 675-7650
Office: (647) 891-7656

COMMERCIAL
INDUSTRIAL

RESIDENTIAL
PRO SERVICES

OUR HISTORY

We've come along way over the years.

Since the foundation of our construction business, MECH ARM GROUP has been designing and constructing major commercial and residential construction projects across Ontario.

The flexibility to mobilize the right people to deliver unique construction solutions; an unwavering focus on delivering value to your business bottom line; and the capability to leverage innovation to meet emerging challenges and keep you at the fore.

This is MECH ARM GROUP.

As a registered builder, Mech Arm Group has developed fully serviced lots in new neighborhoods and built custom homes for our clients. When developing multi-residential projects, our team collaborates with a skilled and professional team to create smartly designed and robust multiple dwelling units. Our multi-disciplinary knowledge in development and construction allows us to bring custom luxury home quality to multi-residential units.

OUR VISION

Delivering
EXCELLENCE



Our vision is to generate sustainable returns and benefits to our clients through our services, while providing safe, rewarding and fulfilling careers for our people.

CONSTRUCTION, REDEFINED.

GROUP OF COMPANIES UNDER MECH ARM GROUP

We are Mech Arm Group, Inc.



EXPERIENCE • SKILLS • RESULTS

SHAPING THE FUTURE!

Stunning structures, sustainably built.



Our PRESENCE

100%
Happy Clients

100+
Successful Projects Delivered

70+
Contractors & Employees



OUR VALUES

Ethics. We are uncompromising in our integrity, honesty, and fairness.

Safety & Health. We are relentless in keeping people safe from harm, and we provide a healthy work environment.

Quality. We are passionate about excellence and doing our work right the first time. Our reputation depends on our delivered value in the eyes of every customer and community.

People. We inspire each other with important work full of purpose, challenging development opportunities, and rewarding careers. We aspire to be the employer of choice in our industry.

Culture. We actively build a diverse, inclusive, and collaborative work environment where all views are welcomed, openness is encouraged, and teamwork and merit are cornerstones. We are proud of what we do and how we do it—and we enjoy doing it!

Relationships. We build positive, long-term relationships with our customers, joint-venture partners, subcontractors, suppliers, and colleagues that are built on trust, respect, and collaboration.

Innovation. We develop and apply state-of-the-art technology. We listen, learn, and seek out the best ideas. We attack complacency and continually improve.

Sustainability. We improve the quality of life in communities where we work by respecting local cultures, engaging local people, and protecting the environment.

FOLLOW US ON TWITTER & INSTAGRAM

#FUTUREU_with_MechArmGroup



The flexibility to mobilize the right people to deliver unique construction solutions; an unwavering focus on delivering value to your business bottom line; and the capability to leverage innovation to meet emerging challenges and keep you at the fore.

This is **MECH ARM GROUP**.



ETHICS AND COMPLIANCE

Committed to the highest ethical standards

Mech Arm Group will conduct all business transactions in a proper, fair, impartial, and ethical manner, avoiding even the appearance of impropriety. We seek customers and partners who share our values and standards of conduct.

OUR PEOPLE ARE OUR GREATEST ASSET.



We design, construct, equip, operate, and manage anything that can be built.

Be Canada's premier engineering, construction, and project management organization by achieving extraordinary results for our customers, building satisfying careers for our people, and earning a fair return on the value we deliver. We build positive, long-term relationships with our customers, joint-venture partners, subcontractors, suppliers, and colleagues that are built on trust, respect, and collaboration.



Client Testimonial

"Mech Arm Group renovated our master bath shower. They were punctual, courteous, cleaned up every day, stayed on budget, and most importantly they were true professionals who did a great job. We are extremely happy with the great work they did on the shower renovation and we would definitely recommend this team to others!"

– Mary Ellen K.



Shaping the FUTURE.



**YOU
DREAM IT.
WE
BUILT IT!**

**COMMITTED TO THE
HIGHEST ETHICAL
STANDARDS**

Mech Arm Group will conduct all business transactions in a proper, fair, impartial, and ethical manner, avoiding even the appearance of impropriety. We seek customers and partners who share our values and standards of conduct.

SINCE
2015



WE HAVE THE VISION OF CONSTRUCTION

Our work covers a range of delivery models, including:

- Design and construct.
- Construct only.
- Construction management.
- Alliances and joint ventures.
- Public-Private Partnerships (PPPs)

Our work is guided by our principles of:

- Integrity.
- Accountability.
- Innovation.
- Delivery.

Our code of conduct supports our principles and outlines the standards of behavior we expect from our people.

Working closely with clients and partners, our projects connect communities, play a key role in commercial and residential development, help drive our client's economic growth and provide vital long-term infrastructure.

Our operations span throughout the GTA, including some of the region's most iconic projects.

OUR EXPERTISE

The scope of our service, depth of experience, and the quality of our people has positioned us at the front of the pack.

Our continued success lies in the strength of our client base and the diversity of the sectors we work in. We retain high levels of repeat business from long-established client relationships amongst key private and institutional corporates, as well as federal, state, and local government agencies.

Our expertise extend across the retail, residential, commercial, government, health and aged care, leisure, aquatic, and community markets. Our projects are delivered within time by focusing on quality and safety. Mech Arm Group offers a holistic solution tailored to the exact needs of our clients.

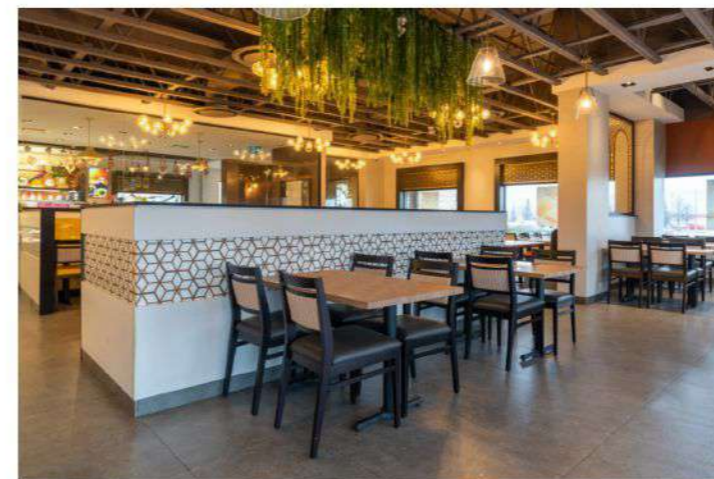
RAJDHANI SWEETS

Commercial Restaurant Project

Featured Project

Project Highlights:

- Commercial project
- Design Services
- Architecture Design
- Permit from the City
- Plumbing
- HVAC
- Patio



www.rajdhanisweets.ca

RAJDHANI SWEETS

Commercial Restaurant Project

Featured Project



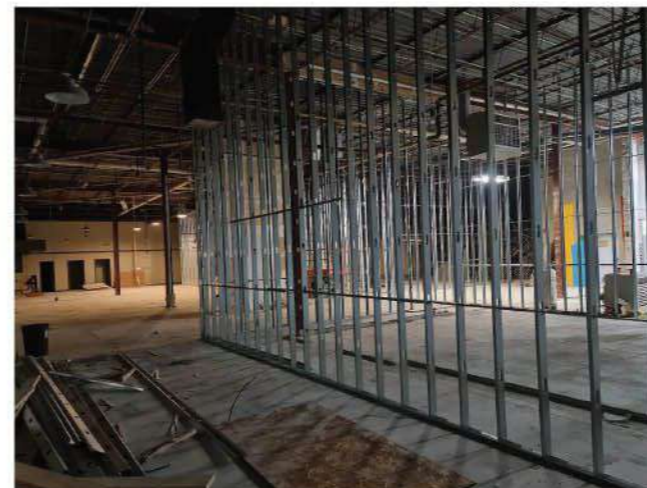
RAJDHANI FACTORY

Commercial Warehouse Development Project

Pre
Construction
Phase

Project Highlights:

- Commercial project
- Design Services
- Architecture Design
- Permit from the City
- Plumbing
- HVAC



www.rajdhanisweets.ca

STACKED PANCAKES

Commercial Restaurant Project

Featured Project



Project Highlights:

- Commercial project
- Design Services
- Architecture Design
- Permit from the City
- Plumbing
- HVAC
- Patio



About The Brand:

Punjabi cuisine is a culinary style with rich flavors resulting from slow cooking and a bomb of Indian spices. A portion of Punjabi cuisine entails cooking in a tandoor (called Barbeque in Canada) which is now a huge craze all around the globe.

Hailing from the state of Punjab, our special tradition of feeding people the best in class dishes ensures our customers also have the best dining experience ever.

For more project pictures visit our website at:

www.mecharmgroup.com

STACKED PANCAKES

Commercial Restaurant Project



Featured
Project
Highlights

For more project pictures visit our website at:

www.mecharmgroup.com

STACKED PANCAKES

Commercial Restaurant Project

Featured
Project
Highlights



PUNJABI BY NATURE BRAMPTON

Commercial Building Project

Featured Project



Project Highlights:

- Commercial project
- Design Services
- Architecture Design
- Permit from the City
- Plumbing
- HVAC
- Patio
- Finishing and details



About The Brand:

Punjabi cuisine is a culinary style with rich flavors resulting from slow cooking and a bomb of Indian spices. A portion of Punjabi cuisine entails cooking in a tandoor (called Barbeque in Canada) which is now a huge craze all around the globe.

Hailing from the state of Punjab, our special tradition of feeding people the best in class dishes ensures our customers also have the best dining experience ever.

For more project pictures visit our website at:

www.mecharmgroup.com

PUNJABI BY NATURE OAKVILLE

Commercial Building Project

Featured Project



Project Highlights:

- Commercial project
- Design Services
- Architecture Design
- Permit from the City
- Plumbing
- HVAC
- Patio
- Finishing and details



About The Brand:

Punjabi cuisine is a culinary style with rich flavors resulting from slow cooking and a bomb of Indian spices. A portion of Punjabi cuisine entails cooking in a tandoor (called Barbeque in Canada) which is now a huge craze all around the globe.

Hailing from the state of Punjab, our special tradition of feeding people the best in class dishes ensures our customers also have the best dining experience ever.

For more project pictures visit our website at:

www.mecharmgroup.com

EGGHOLIC

Commercial Dine-in Restaurant Project

Featured Project



About The Brand:

Eggholic is an Indian-style restaurant chain serving a twist to Indian street food not seen around North America. The brand has a wide variety of Indian street food that tastes just like the lahris (Street Cart) found back in India. Whether you are looking for eggs cooked in different forms with yummy gravies, a variety of sandwiches, flavorful rice, or chaat, we've got it!

The restaurant is located at 168 Kennedy Rd S #1, Brampton, ON L6W 3G6.



Project Highlights:

- Commercial project
- Design Services
- Architecture Design
- Permit from the City
- Plumbing
- HVAC
- Patio

IHOP *Now in Ontario Canada*

Commercial Building Project

Featured Project



Project Highlights:

- Commercial project done Brampton on Steeles
- Design Services
- Architecture Design
- Permit from the City
- Plumbing, HVAC, Patio



www.ihop.ca

IHOP is an American multinational pancake house restaurant chain that specializes in American breakfast foods.

BRAR'S SWEET

Commercial Restaurant Project

Featured Project



Project Highlights:

- Commercial project in Brampton
- Design Services
- Architecture Design
- Permit from the City
- Plumbing, HVAC, Patio

www.brars.com

BRAR'S. Brar's is one of Canada's largest ethnic food brands. For over two decades now, we have been the trusted name in households for a variety of dairy products, Indian sweets and snacks.



HUMBER WEST PLAZA

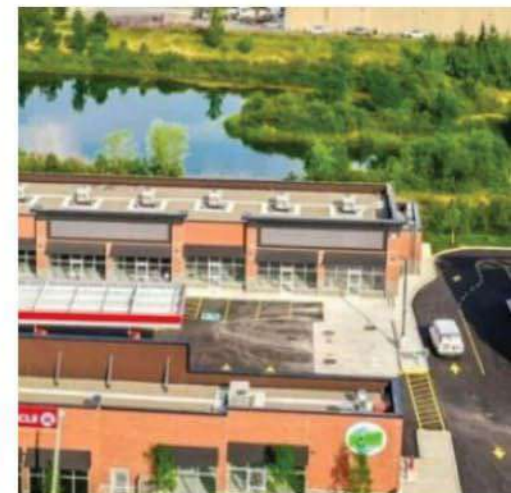
Commercial project

Featured Project



Project Highlights:

- Planning, Design & Architecture
- The structure of the construction (FRAMING)
- Mechanical, Electrical, and Plumbing (MEP)
- Insulation and waterproofing
- Finishes and closures



U 2 85
COTTRELLE
BLVD.

The Humber West Plaza is situated on Cottrelle Blvd & Humberwest Pkwy, Brampton, ON. The project consists of the following phases:

HOLY SHAKES

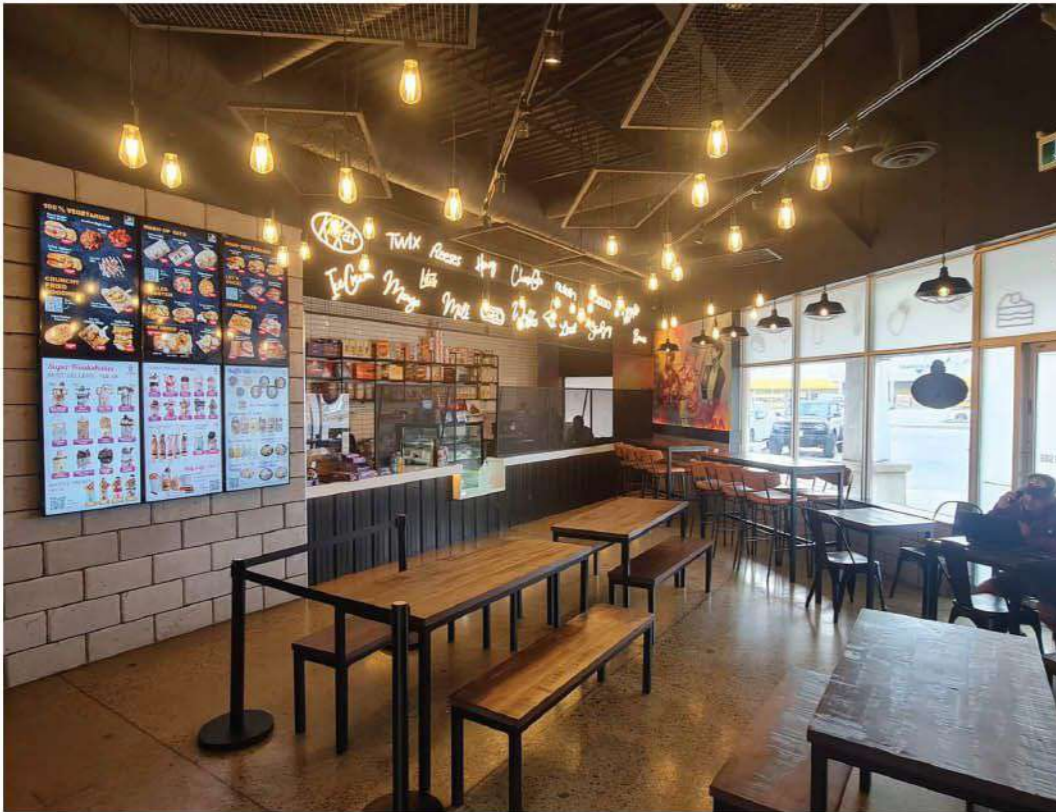
Commercial Restaurant Project in Toronto

Multiple Locations:
Brampton
Milton

DAAL ROTI / MULTIPLE LOCATIONS

Commercial Restaurant Project

Dine-in
& Take-out
Locations

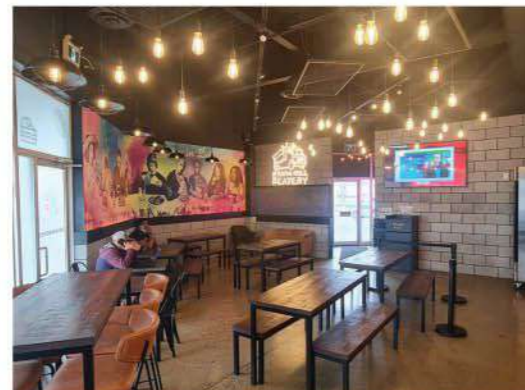


www.daalroti.ca

- Brampton
- Mississauga
- Niagra Falls
- Bolton
- Vaughan
- Waterloo
- Barrie
- Waterloo
- Pickering
- Georgetown
- London
- Ottawa
- Kingston



www.HolyShakes.ca



KHAZANA BY SANJEEV KAPOOR

Commercial Building Project

Featured
Project
Highlights



Khazana

Sanjeev Kapoor is one of the most influential chefs for Indian cuisine in the 21st century. Awarded the 'Best Chef of India' by the government, receiving the Padma-Shri award (India's highest civilian award) for his culinary contribution and for putting India on the world's culinary map.



Project Highlights:

- Commercial project
- Design Services
- Architecture Design
- Permit from the City
- Plumbing
- HVAC
- Patio



2 SITES IN BRAMPTON

Commercial Restaurant Project in Toronto

Take-out
Restaurant
Location in
Brampton



Different Eatries / Franchised in the Greater Toronto Area. For more project pictures visit our website at: www.mecharmgroup.com



Project Overview

Mech Arm Group has helped Sweet Bites to build this beautiful location for their take-out and dine-in restaurant in Brampton, Ontario. The project consists of the following phases:

- Planning, Design & Architecture
- The structure of the construction (FRAMING)
- Mechanical, Electrical, and Plumbing (MEP)
- Insulation and waterproofing
- Finishes and closures



GUAC MEXI GRILL

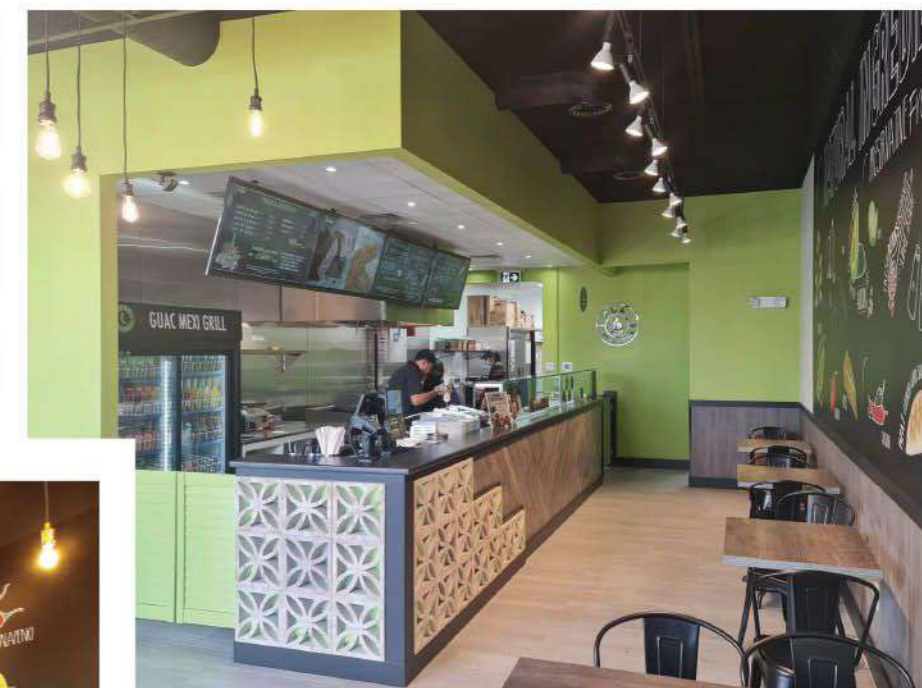
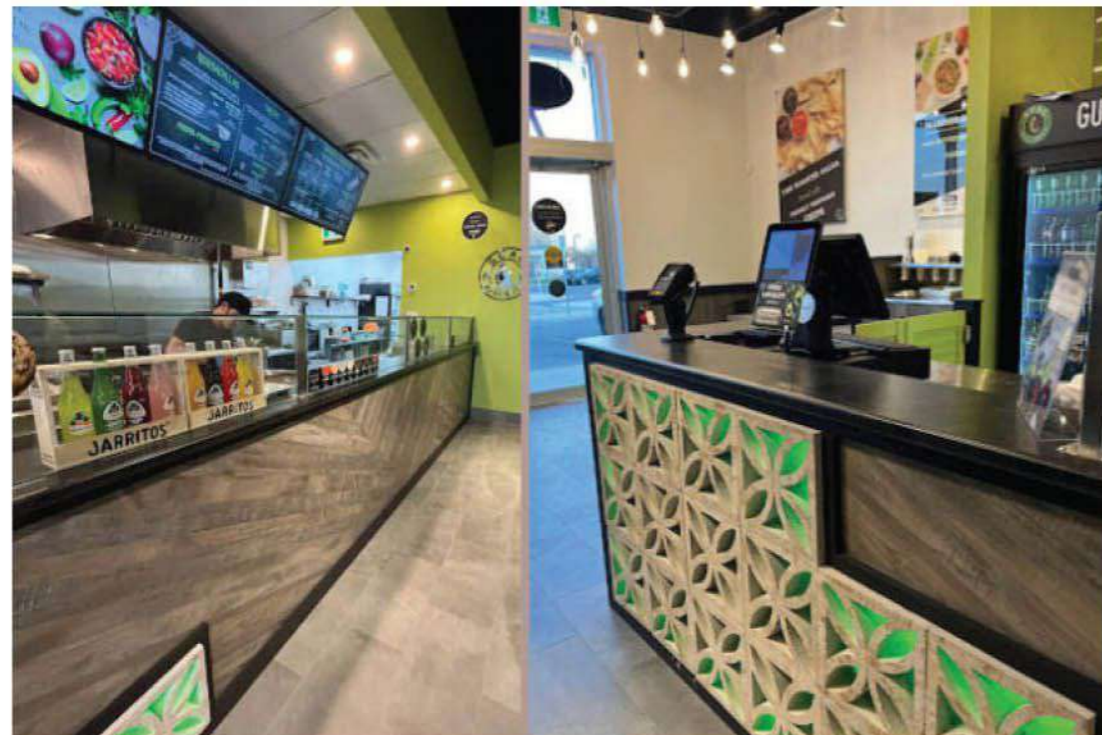
Commercial Restaurant Projects delivered in Multiple Cities

Take-out
Restuarant location
in Brampton



GUAC MEXI GRILL

Commercial
Building Project



Different Eatries / Franchised in the Greater Toronto Area. For more project pictures visit our website at: www.mecharmgroup.com

Guac Mexi Grill - Multiple locations

- Cornwall
- Ottawa- Kanata
- Chatham
- Burlington
- Stouffville
- St. Catherine
- Milton
- St. Thomas
- Guleph

DESI ROAD

Commercial Restaurant Project



Building a commercial project, Mech Arm Group is capable of providing a complete turnkey construction project including architectural, structural, mechanical and electrical design for any size business.



www.Dessiroad.ca

RETAIL STORE

Commercial Projects



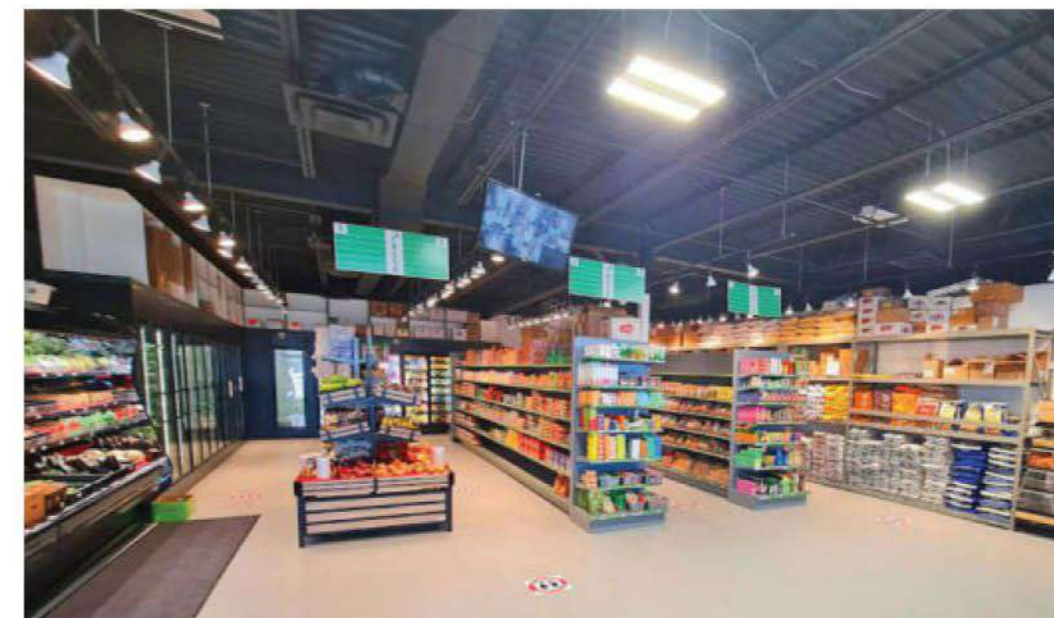
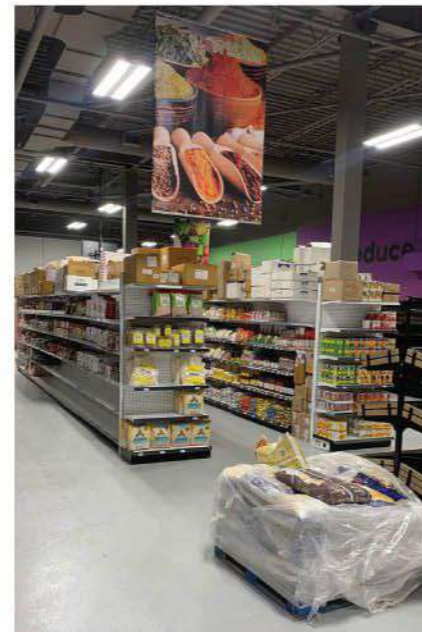
Clients include:

- Asian Food Land
- Desi Road Restaurant
- Titan VIP Security
- Doctors Clinic
- Brampton Pharmacy



For more project pictures visit our website at:

www.mecharmgroup.com



BEAUTY SALON

Unisex Beauty Salon Project



Project Highlights:

- Commercial project
- Design Services
- Architecture Design
- Permit from the City
- Plumbing
- HVAC
- Flooring
- Millwork and Finishing



Shaping the
FUTURE.

For more projects please visit our website:

www.MechArmGroup.com

PHARMACY AND WALKIN

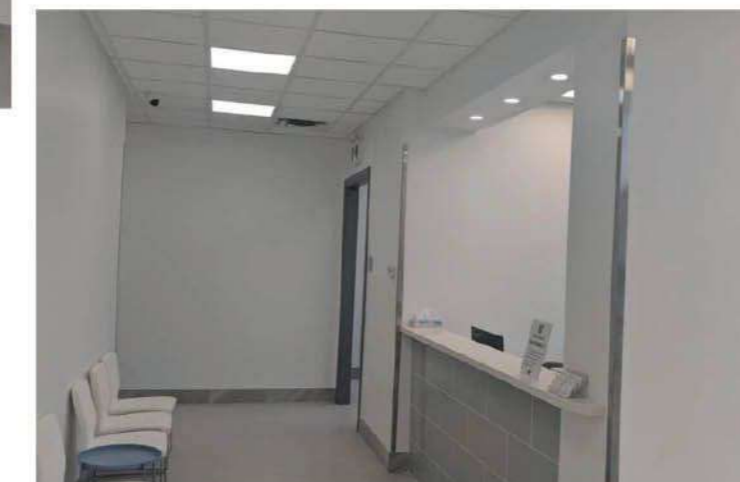
Commercial Projects



VAUGHAN Pharmacy

Project Highlights:

- Planning, Design & Architecture
- Permits arrangement
- The structure of the construction (FRAMING)
- Mechanical, Electrical, and Plumbing (MEP)
- Insulation and waterproofing
- Finishes and closures



For more project pictures visit our website at:

www.mecharmgroup.com

DESIGN SERVICES



*YOU DREAM IT.
WE BUILD IT!*



DESIGN BUILD

We have operated in a design-build capacity where our dedicated team is involved in the project from design conception to completion. In this role, Mech Arm Group delivers innovate project design, project construction management, and a Mech Arm warranty.



RESIDENTIAL

WE DESIGN, CONSTRUCT, EQUIP, AND MANAGE ANYTHING THAT CAN BE BUILT FOR YOUR HOME



CUSTOM BUILD

WHERE SMALL DETAILS CREATE THE BIG PICTURE



RENOVATION

RESIDENTIAL | COMMERCIAL

[VIEW PROJECTS](#)



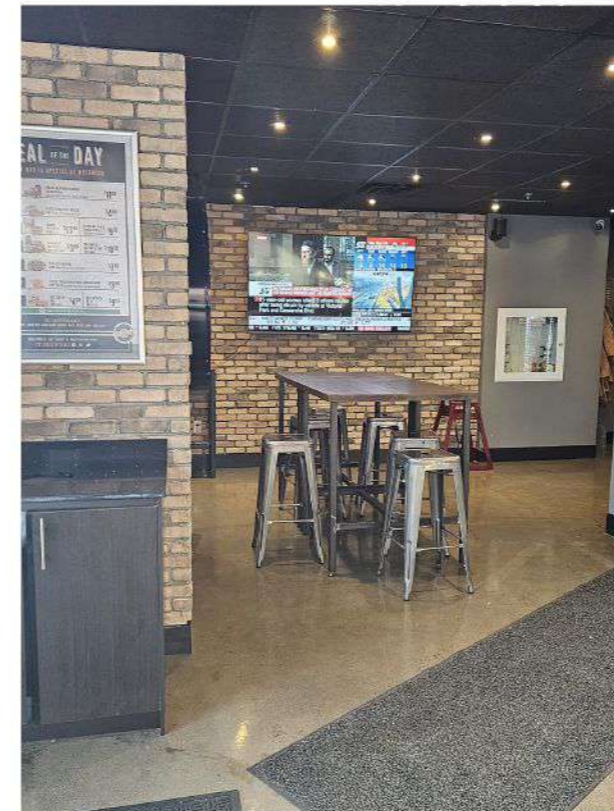
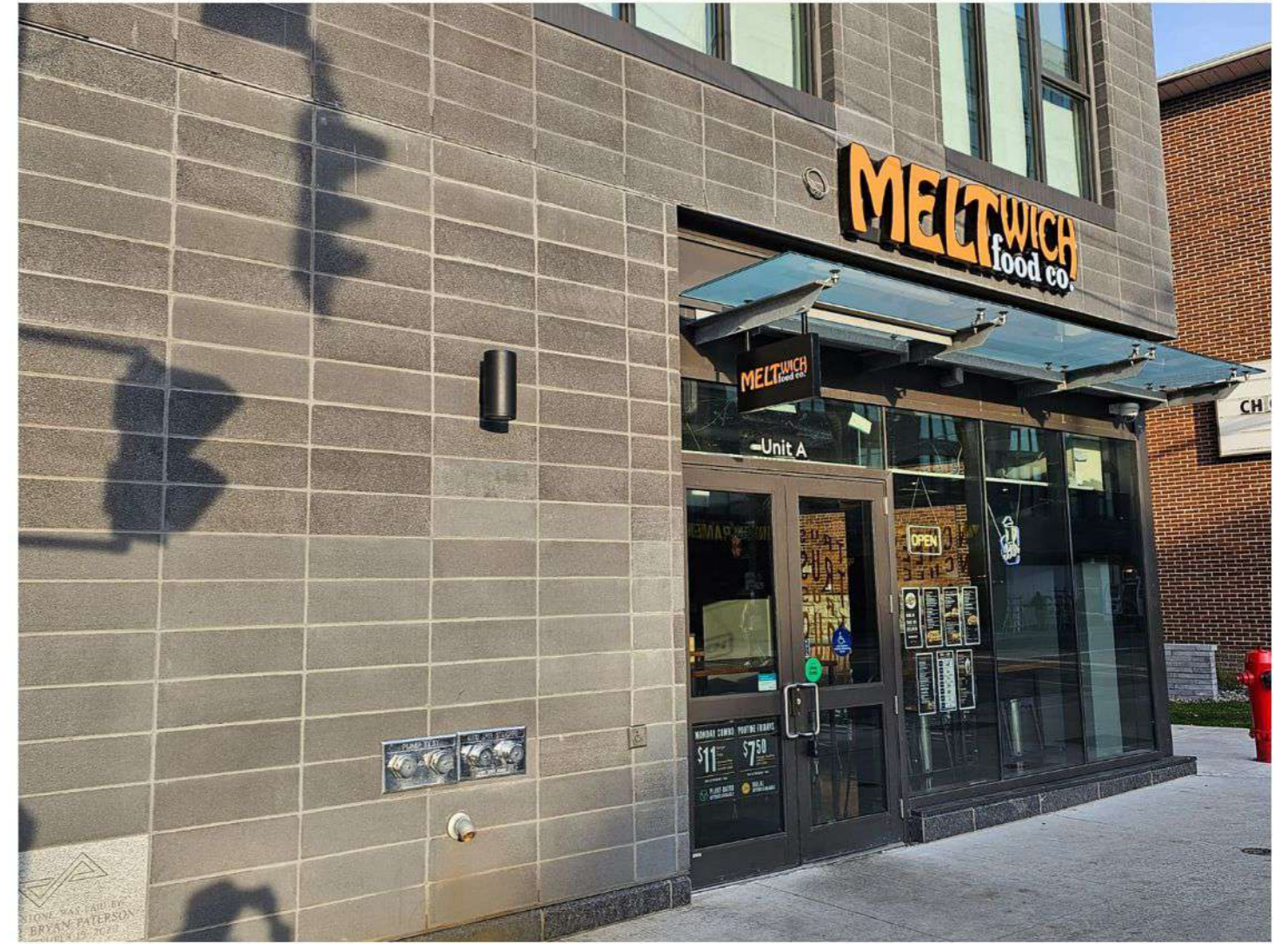
INTERIOR DESIGN

We have operated in a design-build capacity where our dedicated team is involved in the project from design conception to completion. In this role, Mech Arm Group delivers innovate project design, project construction management, and a Mech Arm warranty.



MELTWICH KINGSTON

Commercial Restaurant Project



DOSA EATERY/SHAKE THERAPY

Commercial Restaurant Project



Upcoming

- Barrie
- Hamilton
- Burlington



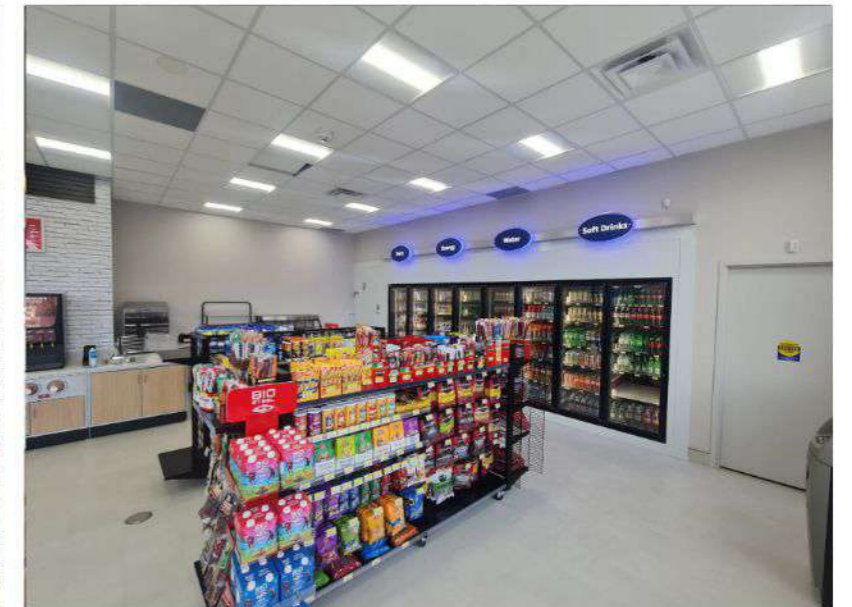
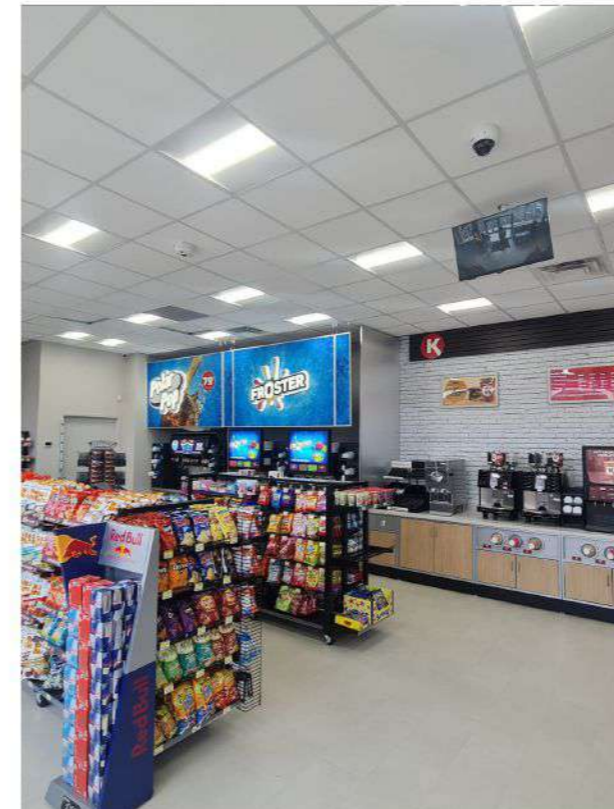
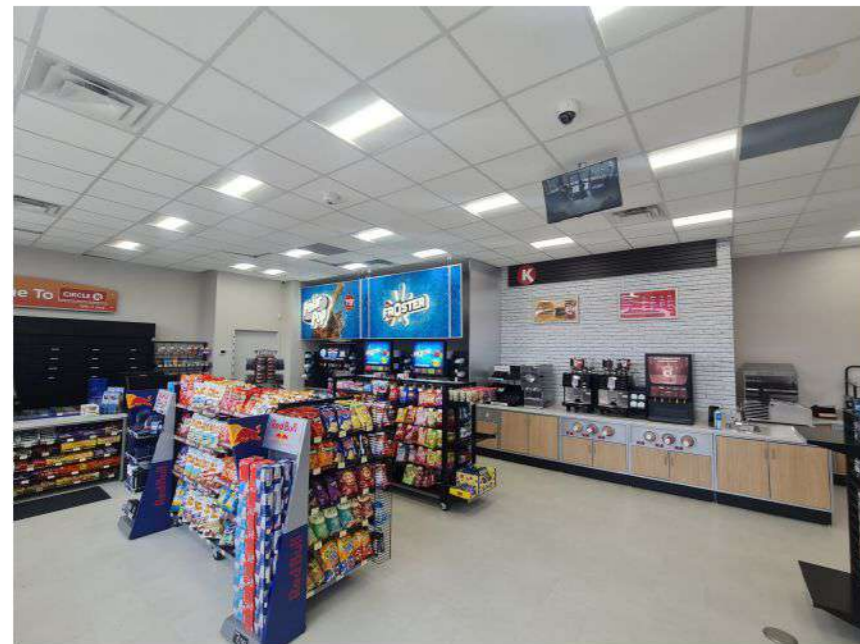
Shaping the FUTURE.

For more projects please visit our website:

www.MechArmGroup.com

CIRCLE K CONVIENT STORE

Commercial Restaurant Project



BRAMPTON